

BBC Intro Kit

Introduction drills for implant use

It can determine the ideal positions of prostheses.



■ 1 Set Contents

Post



Post tip: ϕ 2mm
Post height: 8mm

Drill Guide



Drill: ϕ 2mm
Guide height: 8mm

Spare Drill



Drill: ϕ 2mm
Drill length: 8/10mm

Tissue Punch



ϕ 4 / ϕ 5mm

Remover



- ① Post ϕ 6mm
- ② Post ϕ 7.5mm
- ③ Post ϕ 9mm
- ④ Post ϕ 10.5mm
- ⑤ Post ϕ 12mm

- ⑥ Drill Guide ϕ 6mm
- ⑦ Drill Guide ϕ 7.5mm
- ⑧ Drill Guide ϕ 9mm
- ⑨ Drill Guide ϕ 10.5mm
- ⑩ Drill Guide ϕ 12mm

- ⑪ Drill 2-8mm
- ⑫ Drill 2-10mm
- ⑬ Tissue Punch ϕ 4mm
- ⑭ Tissue Punch ϕ 5mm
- ⑮ Remover

Intro Kit Operating Method

■ Single-Tooth Case

- ① Using the Post, confirm the size of the prosthesis to be placed.



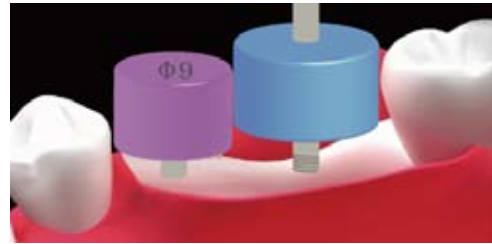
- ② Select the Drill Guide which fits the size of the prosthesis to be placed.



※ Hereafter, do the drilling in accordance with Mytis Arrow Implant drilling protocol.

■ Multiple-Teeth Case

After the first drilling, install the Post which is the same size as the drill and take the post as the adjacent tooth that becomes the basis for the subsequent drilling. Then, select the size of drill in like manner and continue to do the drilling.



◆ A Missing Free End in the Left Mandibular First and Second Premolar



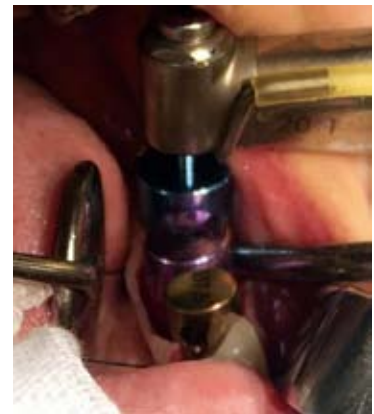
- Step 1
Make the position by using the Drill Guide φ9.



- Step 2
After making the position, along the Post φ7.5, make the position by using the Drill Guide φ9.



- Step 3
Confirm the position with the Post φ7.5 and φ9.

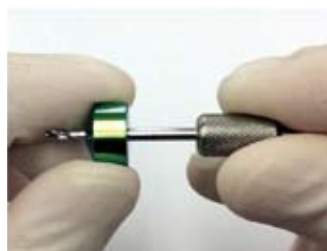


- Step 4
Make the position by using the Drill Guide φ10.5.

Maintenance Method



- ① Combine the contra part in the Drill Guide into the concave part in the Remover.



- ② Hold the Guide part and turn the Remover in a counter-clockwise direction to loosen the Drill Guide.



- ③ Detach the Remover and remove the Guide part from the drill.



- ④ Wash the parts with brush or ultrasonic waves, etc. After washing, be sure to keep the parts in a dry condition.

※ After washing, assemble these parts in a procedure opposite to the above procedure and keep them in a tool box. Be sure to use the product before use.



BrainBase Corporation

Access Oimachi Bldg. 6F, No. 1-49-15, Oi
Shinagawa-ku, Tokyo Japan 140-0014
Tel : +81-3-3778-0745 / +81-3-3778-4910

Distributor :